

**We just made  
our best paint  
even better.**

- Enhanced UV protection
- Early moisture resistance
- Low temp application
- Limited lifetime warranty

**All Weather Formulation For Our Pacific Northwest  
Climate Puts Evolution Exterior Above the Competition.**

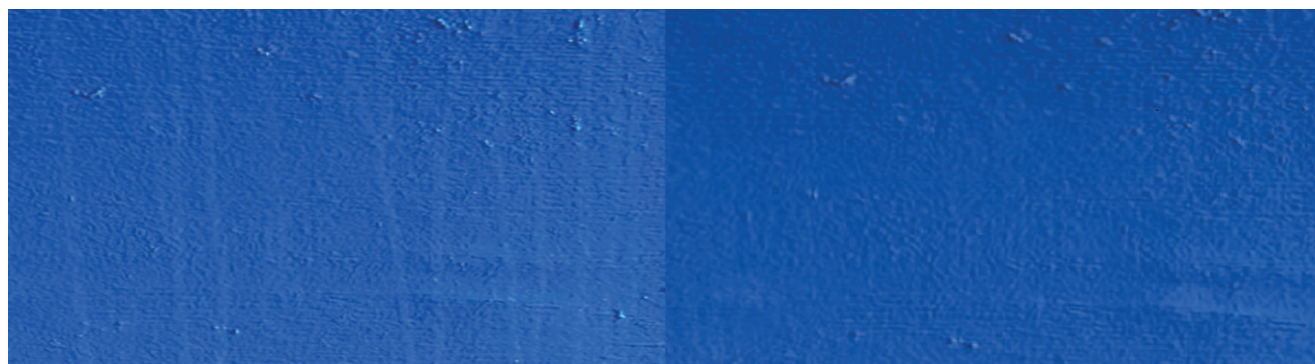
**UV DURABILITY — FADE RESISTANCE COMPARISON STUDY**

Neutral Base tinted with ONLY blue	Color Fade after 1000 hours of UV testing <i>(equivalent to 1 year of constant sunlight)</i>
MILLER PAINT EXTERIOR EVOLUTION	0.73*
REGIONAL COMPETITION A	1.67
NATIONAL COMPETITION B	1.49

\* Figure is measured in Delta E and used for comparing the degree of color change from the original color (0.0) to the results after 1000 hours of UV light exposure. In this case, the number closest to 0 has the best fade resistance.

## EARLY MOISTURE RESISTANCE COMPARISON STUDY

### Miller Paint Exterior Evolution



1 minute after simulated rainfall

1 hour after simulated rainfall

### National Competition



1 minute after simulated rainfall

1 hour after simulated rainfall

## SPECIFICATIONS FOR EVOLUTION EXTERIOR PAINT

	Velvet	Satin
Volume Solids	42.3%	40.3%
Viscosity	100-105 KU	100-105 KU
Weight Per Gallon	11.22 WPG	10.54 WPG
Gloss	2-6% @60°   5-20% @85°	15-25% @60°   35-50% @85°
VOC* (minus water)	49 g/L	49 g/L

\*MAXIMUM VOC CONTENT FOR THIS PRODUCT AS PER 40 CFR 59.406

**COVERAGE:** Approximately 250 - 500 square feet per gallon. Two coats recommended for even coverage. Coverage depends on porosity and profile of the surface. Properly prepared surfaces provide the best coverage.

**DRY TIME:** 30 minutes to touch and 2 hours to recoat @ 70°F and 50% relative humidity.

